



# Spectroscopic Record Sheet



## Details on acquisitions

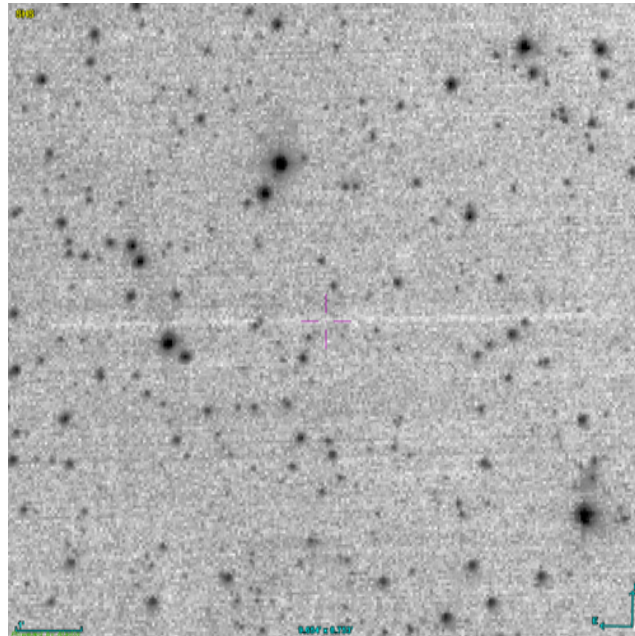
Object	PHR J0646-1235
Coordinates (J2000)	06:46:25.40 -12:35:55.93
Type	Possible PN

Observation date	15.264/01/2026
Weather conditions	/
Observer	2SPOT
Location	Deep Sky Chile (CL)

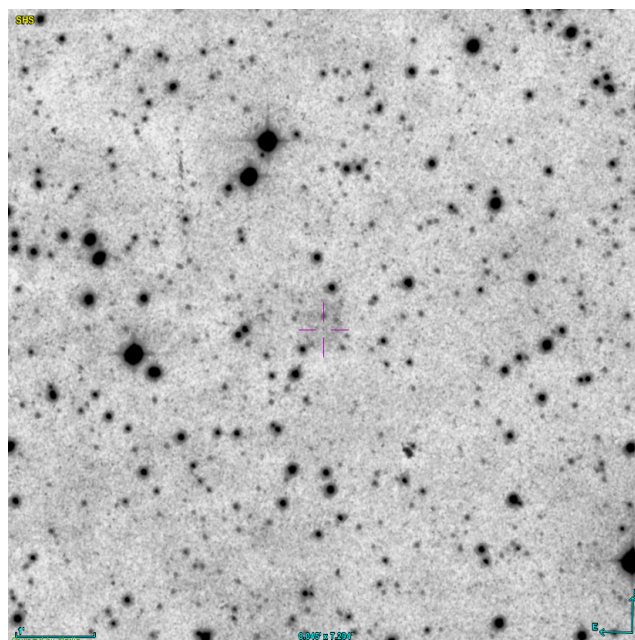
Mount	10 Micron GM3000 HPS
Telescope	Newton 300mm F/4
Spectroscope	Alpy 600 (23um slit)
Resolution (bin 1x1)	~1nm at 656 nm
Principal camera	Atik 414 EX
Dispersion (bin 1x1)	~0,3 nm/pixel at 656 nm
Cam temperature	-10°C
Binning	2x2
Guiding camera	
Data acquisition Soft	Prism v11.2.3.21
Data processing soft	ISIS V6.1.1

Exposure on object	4 x 1200 s
Master Dark	Corrected
Master Flat	Corrected
Master Offset	Corrected
Neon-Argon calibration	Corrected
Reference star calib.	HD49147_B9V
Exposure on ref star	5 x 6.22412 s
Ref star Sp. date	15.295/01/2026

## Slit position



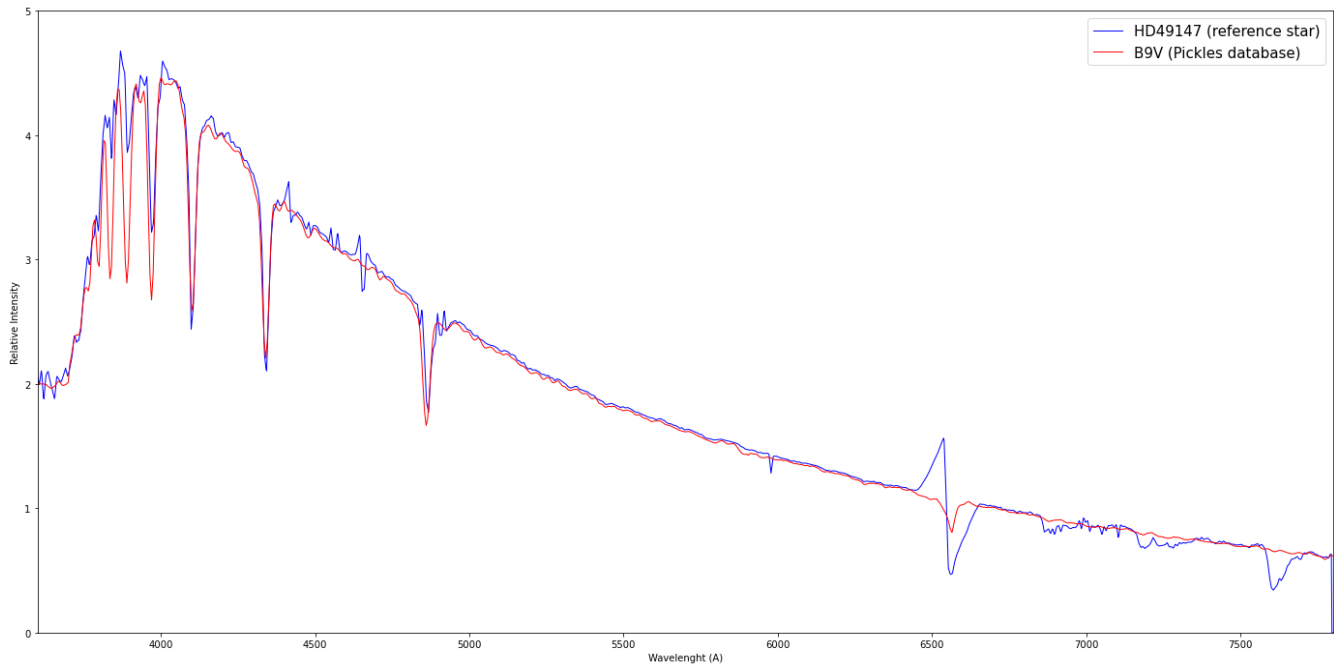
## Object picture(s)



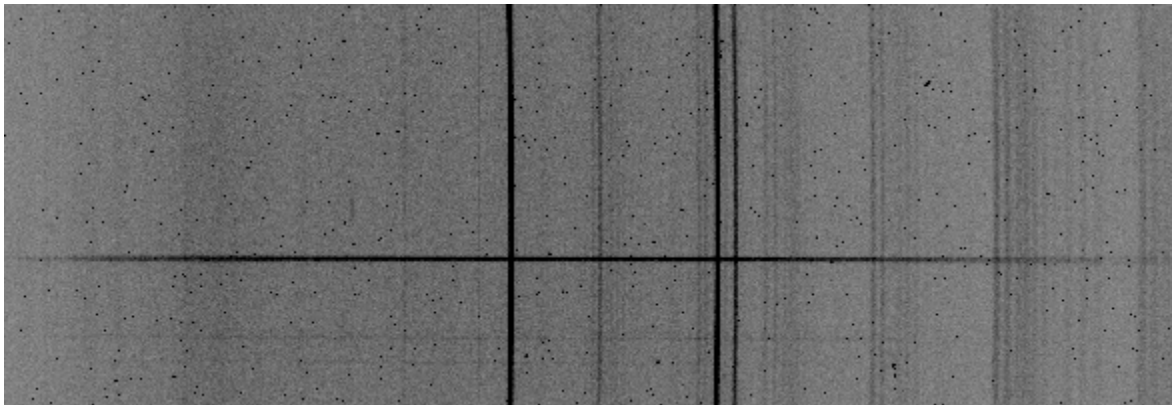


# Instrumental Response and 2D Spectra

Instrumental response (red = theoretical ref star spectrum ; blue = acquired ref star spectrum with instrumental response correction applied)

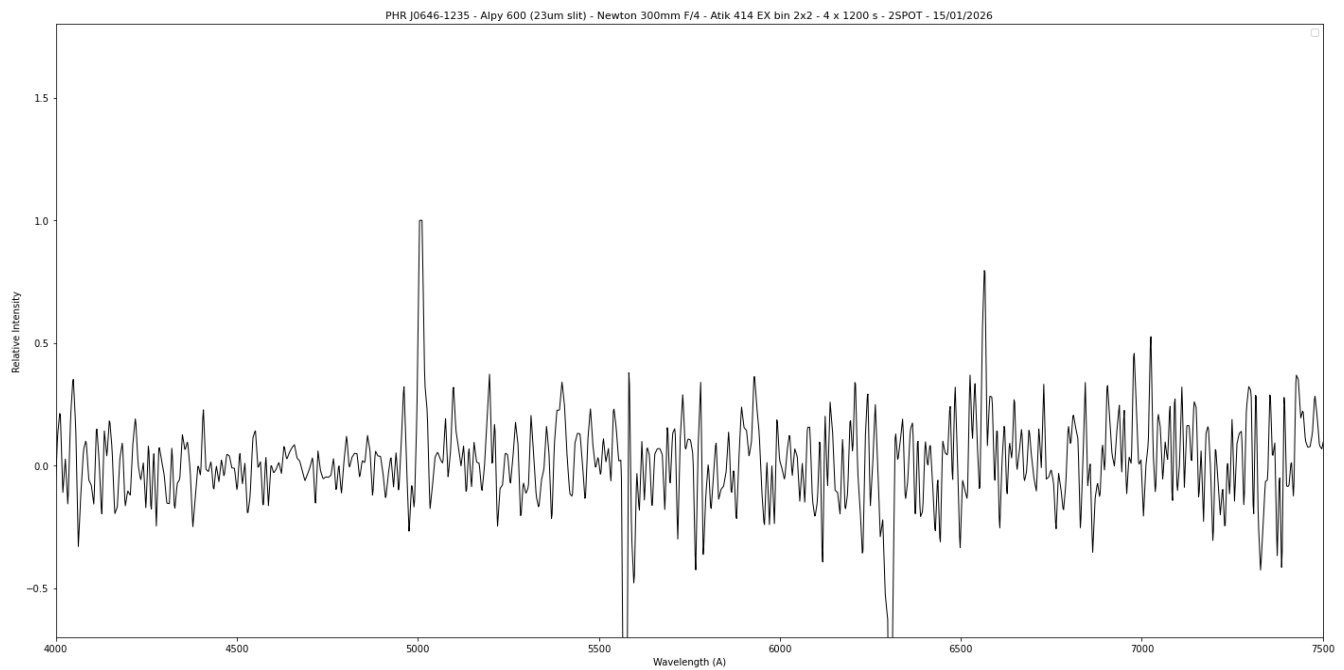


## 2D Raw spectrum



## 2D Processed spectrum





## Comments

Object already classified as Possible PN.  
 [OIII] and Halpha lines detected.  
 PHR J0646-1235 is probably a true PN.